


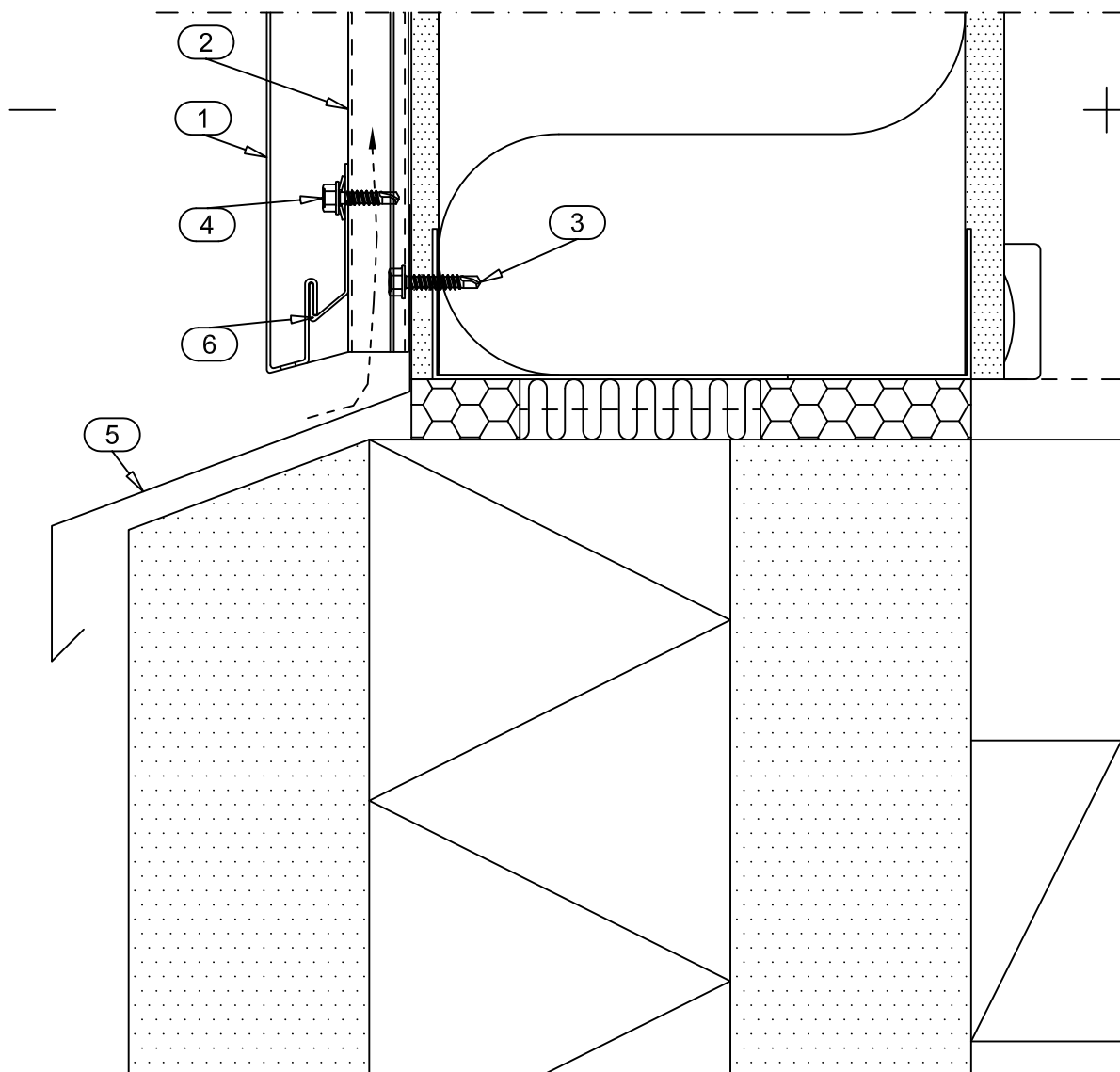
Drw. nr.	Contents of drawing	Date	Rev.	Rev. date			
LRSP500DE-1	Plinth, vertical section	12.08.2011	.	.			
LRSP500DE-2	Horizontal joint, vertical section	12.08.2011	.	.			
LRSP500DE-3	Vertical joint, horizontal section	12.08.2011	.	.			
LRSP500DE-4	External corner, horizontal section	12.08.2011	.	.			
LRSP500DE-5	External corner, horizontal section	12.08.2011	.	.			
LRSP500DE-6	Internal corner, horizontal section	12.08.2011	.	.			
LRSP500DE-7	Internal corner, horizontal section	12.08.2011	.	.			
LRSP500DE-8	Lower edge of window, vertical section	12.08.2011	.	.			
LRSP500DE-9	Upper edge of window, vertical section	12.08.2011	.	.			
LRSP500DE-10	Upper edge of window, vertical section	12.08.2011	.	.			
LRSP500DE-11	Upper edge of door, vertical section	12.08.2011	.	.			
LRSP500DE-12	Upper edge of door, vertical section	12.08.2011	.	.			
LRSP500DE-13	Vertical edge of window, horizontal section	12.08.2011	.	.			
LRSP500DE-14	Vertical edge of window, horizontal section	12.08.2011	.	.			
LRSP500DE-15	Vertical edge of door, horizontal section	12.08.2011	.	.			
LRSP500DE-16	Vertical edge of door, horizontal section	12.08.2011	.	.			
LRSP500DE-17	Side eaves, vertical section	12.08.2011	.	.			
LRSP500DE-18	Gable eaves, vertical section	12.08.2011	.	.			
LRSP500DE-19	Short eaves, vertical section	12.08.2011	.	.			
LRSP500DE-20	Horizontal and vertical joint, support studs fastened by adjustable fastener	12.08.2011	.	.			
City sector		Block	Site/Reg. nr.	File nr.			
Building type			Drawing type				
Building, Name and address			Nr.				
			Contents of drawing		Scale		
			Liberta elegant 500 & 500Grande BASE DETAIL DRAWINGS				
Date 12.08.2011		Designer Ruukki		Work nr.	Work nr.	Drw. nr.	Rev.
Drawn by		Checked					



Contents of drawing

Liberta elegant 500 & 500Grande
Plinth
Vertical section

Date 12.08.2011	Rev. date	Work nr.	Drw. nr.	Rev.
Drawn by Ruukki	Rev.		LRSP500DE-1	
Scale 1:2.5	Building		File nr.	



- ☐ 1. LIBERTA ELEGANT 500 & 500GRANDE
- ☐ 2. SUPPORT STUD CA1SS1
- ☐ 3. SCREW S1H48025D03 (SFS intec SD3-4.8x25)
- ☐ 4. SCREW S3H48020D03A4 (SFS intec SD3-S-A14-4.8x20)
- ☐ 5. PLINTH FLASHING CA1P1X
- ☐ 6. STARTING FILLET CA1SF2

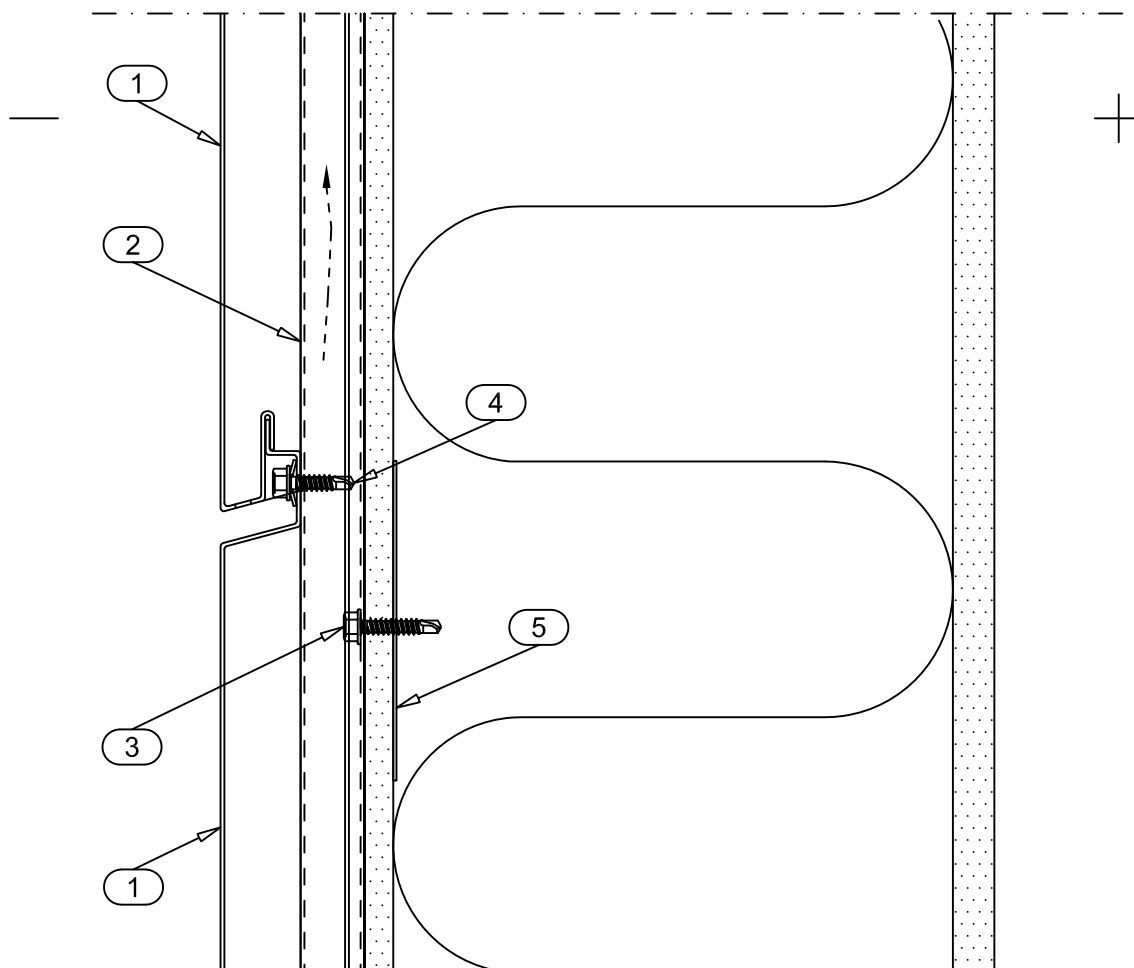
☒ DELIVERY OF RUUKKI



Contents of drawing

Liberta elegant 500 & 500Grande
Horizontal joint
Vertical section

Date 12.08.2011	Rev. date	Work nr.	Drw. nr.	Rev.
Drawn by Ruukki	Rev.		LRSP500DE-2	
Scale 1:2.5	Building		File nr.	



- ☐ 1. LIBERTA ELEGANT 500 & 500GRANDE
- ☐ 2. SUPPORT STUD CA1SS1
- ☐ 3. SCREW S1H48025D03 (SFS intec SD3-4.8x25)
- ☐ 4. SCREW S3H48020D03A4 (SFS intec SD3-S-A14-4.8x20)
- ☐ 5. HORIZONTAL BRACE STRIP (for fastening studs)

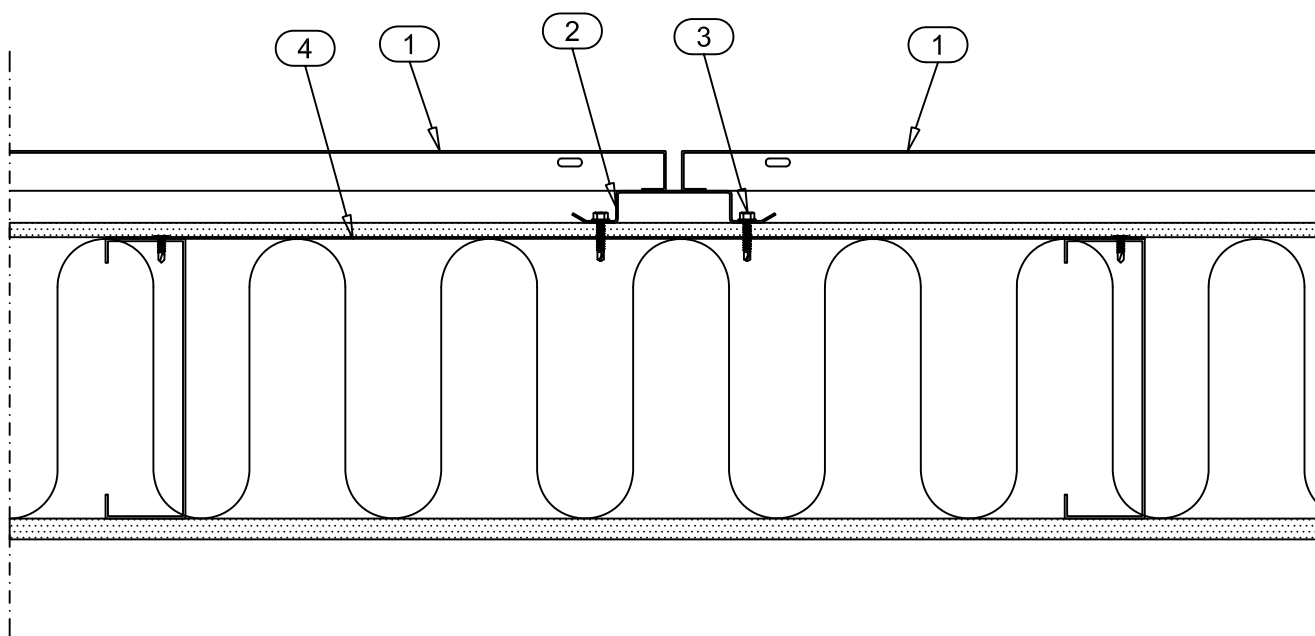
☒ DELIVERY OF RUUKKI



Contents of drawing

Liberta elegant 500 & 500Grande
Vertical joint
Horizontal section

Date 12.08.2011	Rev. date	Work nr.	Drw. nr. LRSP500DE-3	Rev.
Drawn by Ruukki	Rev.			
Scale 1:5	Building		File nr.	



- ☐ 1. LIBERTA ELEGANT 500 & 500GRANDE
- ☐ 2. SUPPORT STUD CA1SS1
- ☐ 3. SCREW S1H48025D03 (SFS intec SD3-4.8x25)
- ☐ 4. HORIZONTAL BRACE STRIP (for fastening studs)

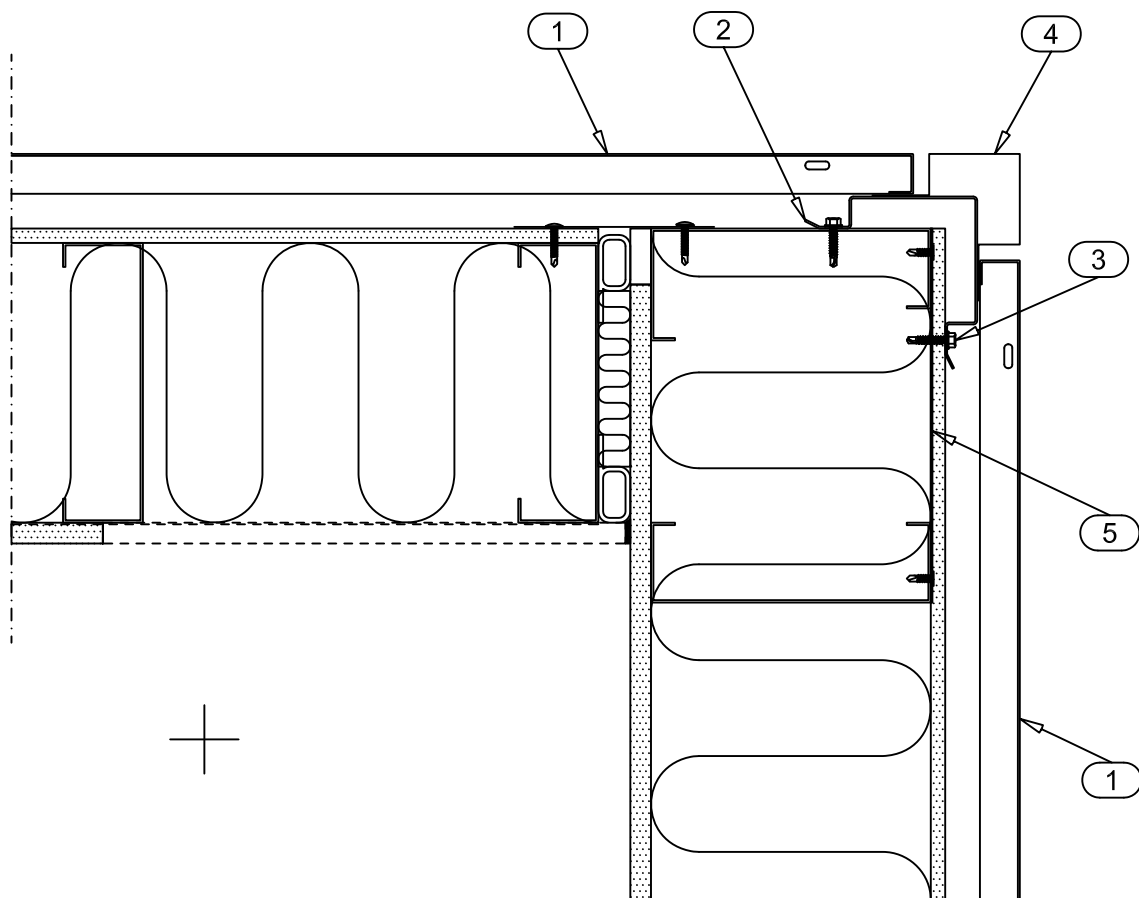
☒ DELIVERY OF RUUKKI



Contents of drawing

Liberta elegant 500 & 500Grande
External corner
Horizontal section

Date 12.08.2011	Rev. date	Work nr.	Drw. nr. LRSP500DE-4	Rev.
Drawn by Ruukki	Rev.			
Scale 1:5	Building		File nr.	



- ☐ 1. LIBERTA ELEGANT 500 & 500GRANDE
- ☐ 2. SUPPORT STUD CORNER CA1SSC1
- ☐ 3. SCREW S1H48025D03 (SFS intec SD3-4.8x25)
- ☐ 4. EXTERNAL CORNER FLASHING CA1EC1X
- ☐ 5. HORIZONTAL BRACE STRIP (for fastening studs)

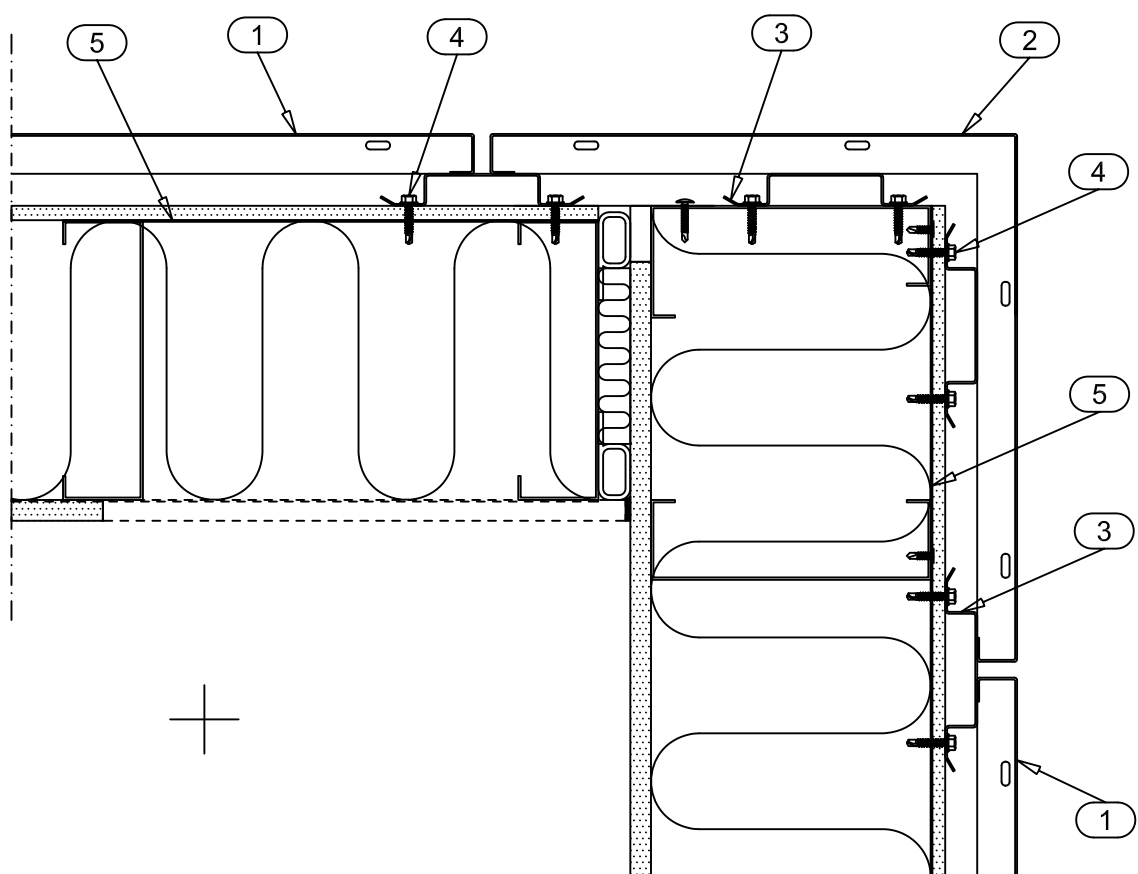
☒ DELIVERY OF RUUKKI



Contents of drawing

Liberta elegant 500 & 500Grande
External corner
Horizontal section

Date 12.08.2011	Rev. date	Work nr.	Drw. nr.	Rev.
Drawn by Ruukki	Rev.		LRSP500DE-5	
Scale 1:5	Building			File nr.



- ☐ 1. LIBERTA ELEGANT 500 & 500GRANDE
- ☐ 2. LIBERTA ELEGANT 500 & 500GRANDE, CORNER PANEL
- ☐ 3. SUPPORT STUD CA1SS1
- ☐ 4. SCREW S1H48025D03 (SFS intec SD3-4.8x25)
- ☐ 5. HORIZONTAL BRACE STRIP (for fastening studs)

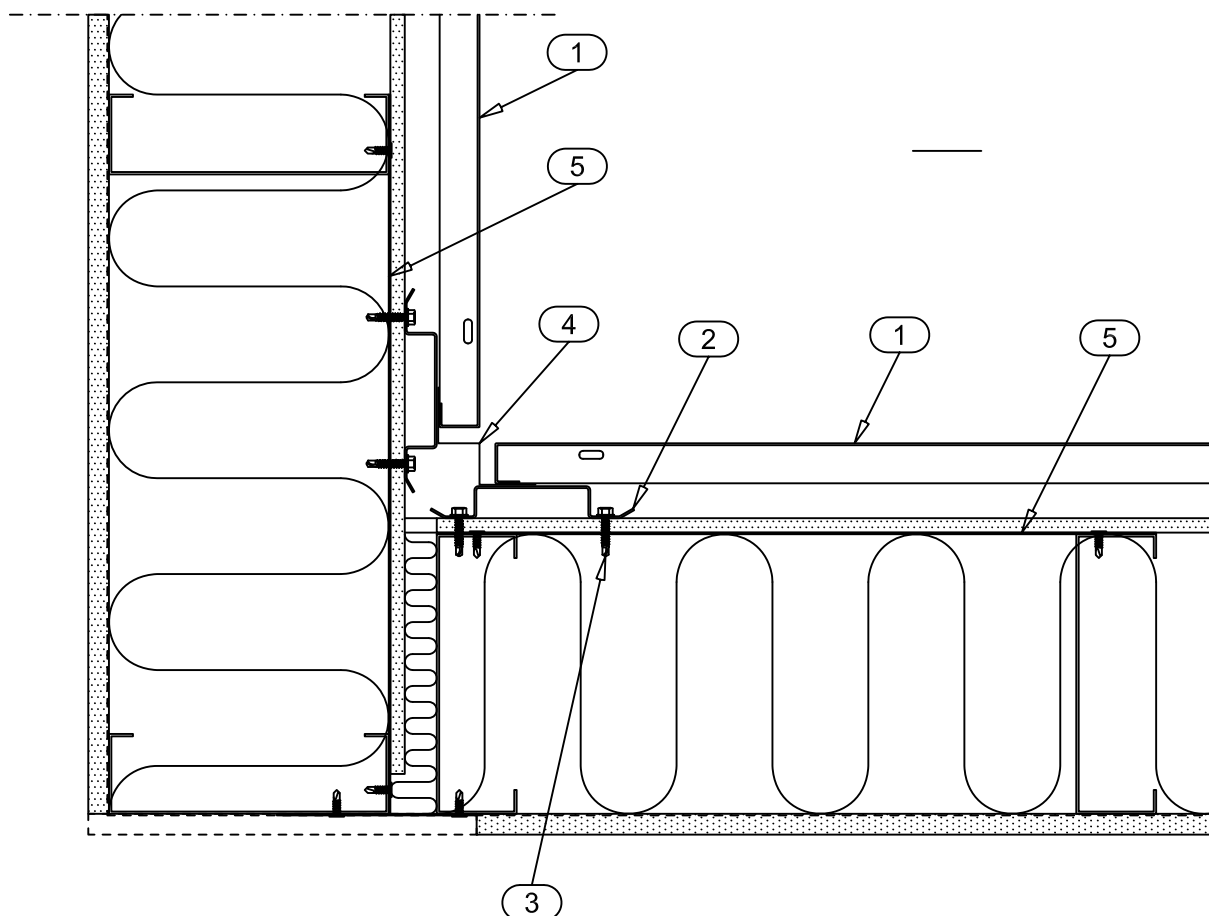
☒ DELIVERY OF RUUKKI



Contents of drawing

Liberta elegant 500 & 500Grande
Internal corner
Horizontal section

Date 12.08.2011	Rev. date	Work nr.	Drw. nr.	Rev.
Drawn by Ruukki	Rev.		LRSP500DE-6	
Scale 1:5	Building			File nr.



- ☐ 1. LIBERTA ELEGANT 500 & 500GRANDE
- ☐ 2. SUPPORT STUD CA1SS1
- ☐ 3. SCREW S1H48025D03 (SFS intec SD3-4.8x25)
- ☐ 4. INTERNAL CORNER FLASHING CA1IC1X
- ☐ 5. HORIZONTAL BRACE STRIP (for fastening studs)

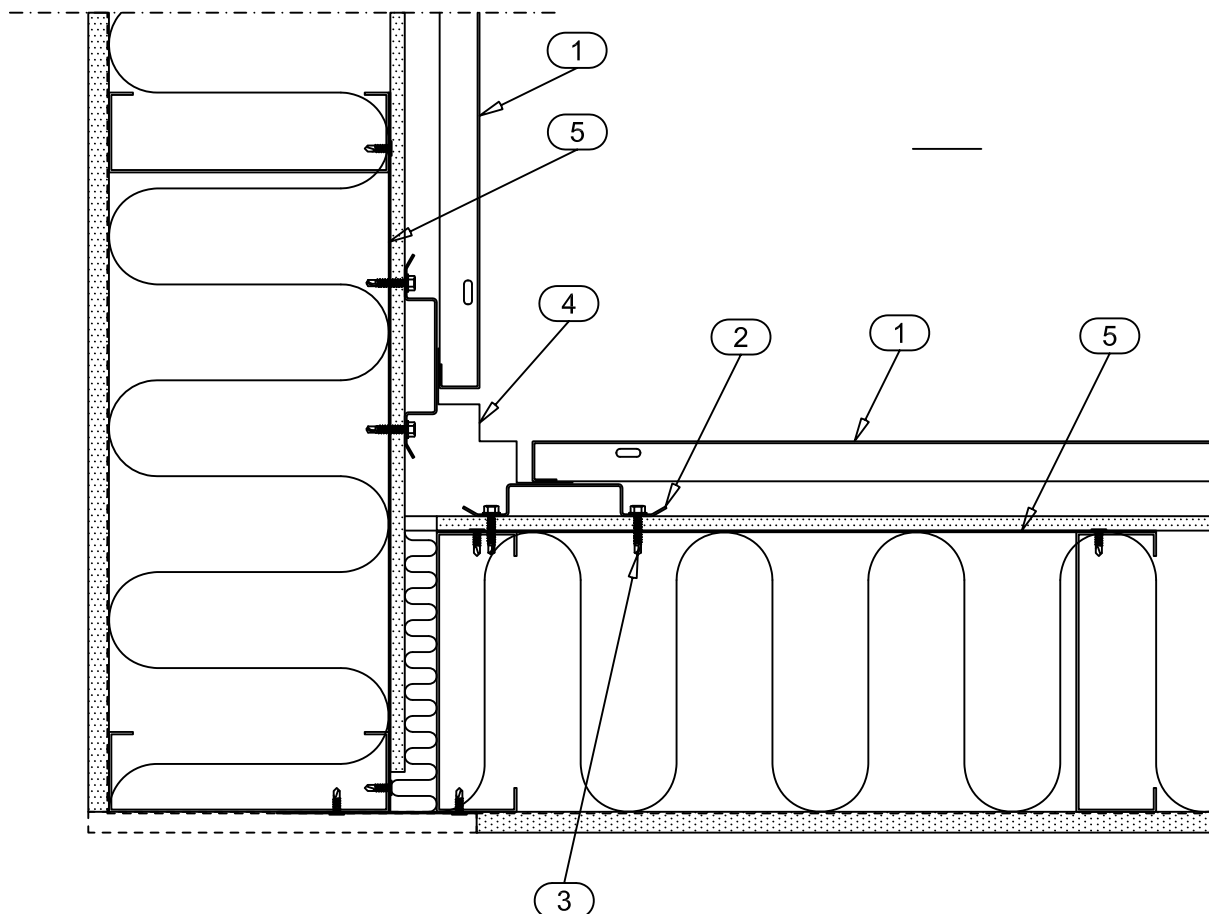
☒ DELIVERY OF RUUKKI



Contents of drawing

Liberta elegant 500 & 500Grande
Internal corner
Horizontal section

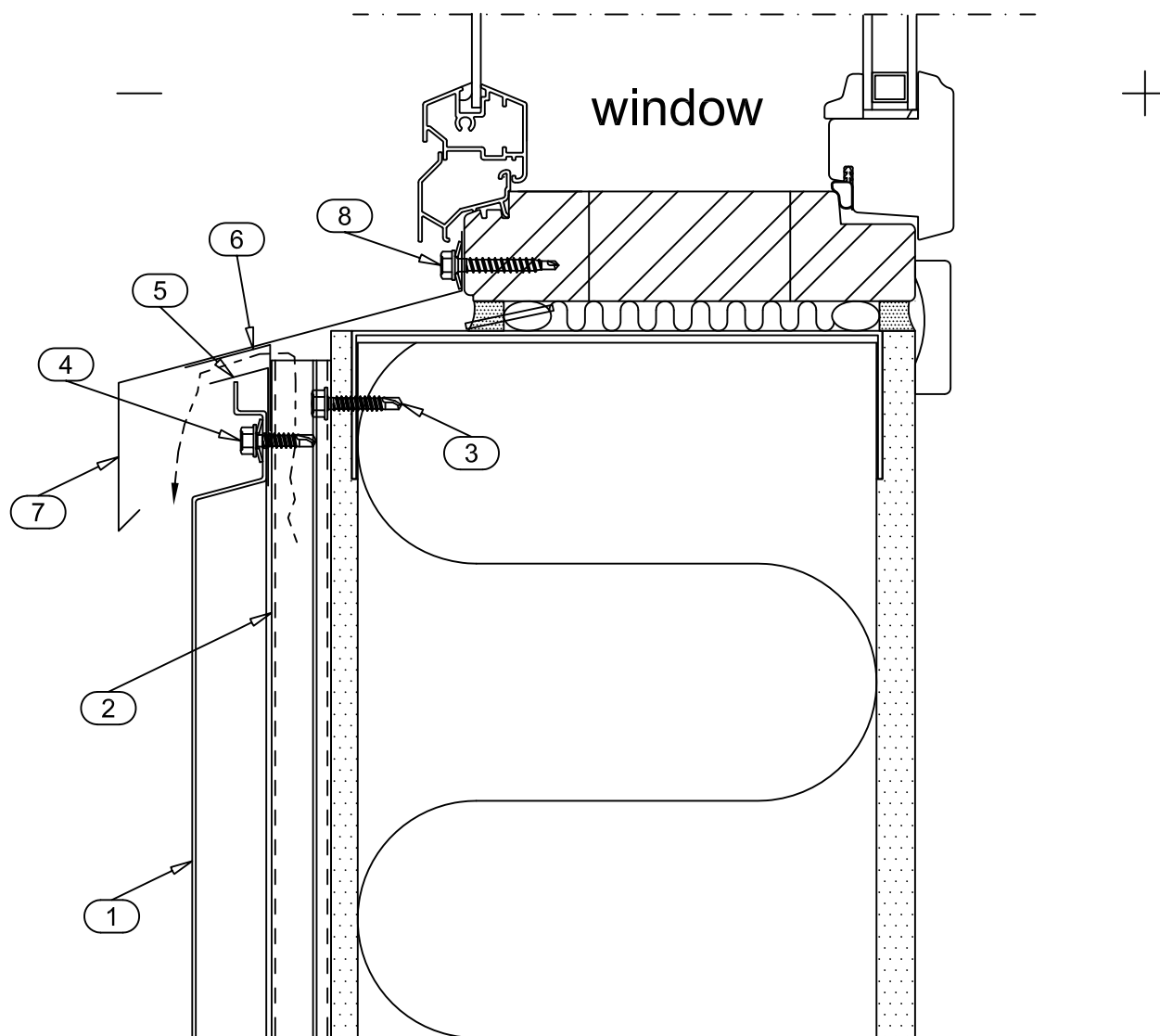
Date 12.08.2011	Rev. date	Work nr.	Drw. nr.	Rev.
Drawn by Ruukki	Rev.		LRSP500DE-7	
Scale 1:5	Building		File nr.	



- ☐ 1. LIBERTA ELEGANT 500 & 500GRANDE
- ☐ 2. SUPPORT STUD CA1SS1
- ☐ 3. SCREW S1H48025D03 (SFS intec SD3-4.8x25)
- ☐ 4. INTERNAL CORNER FLASHING CA1IC2X
- ☐ 5. HORIZONTAL BRACE STRIP (for fastening studs)

☒ DELIVERY OF RUUKKI

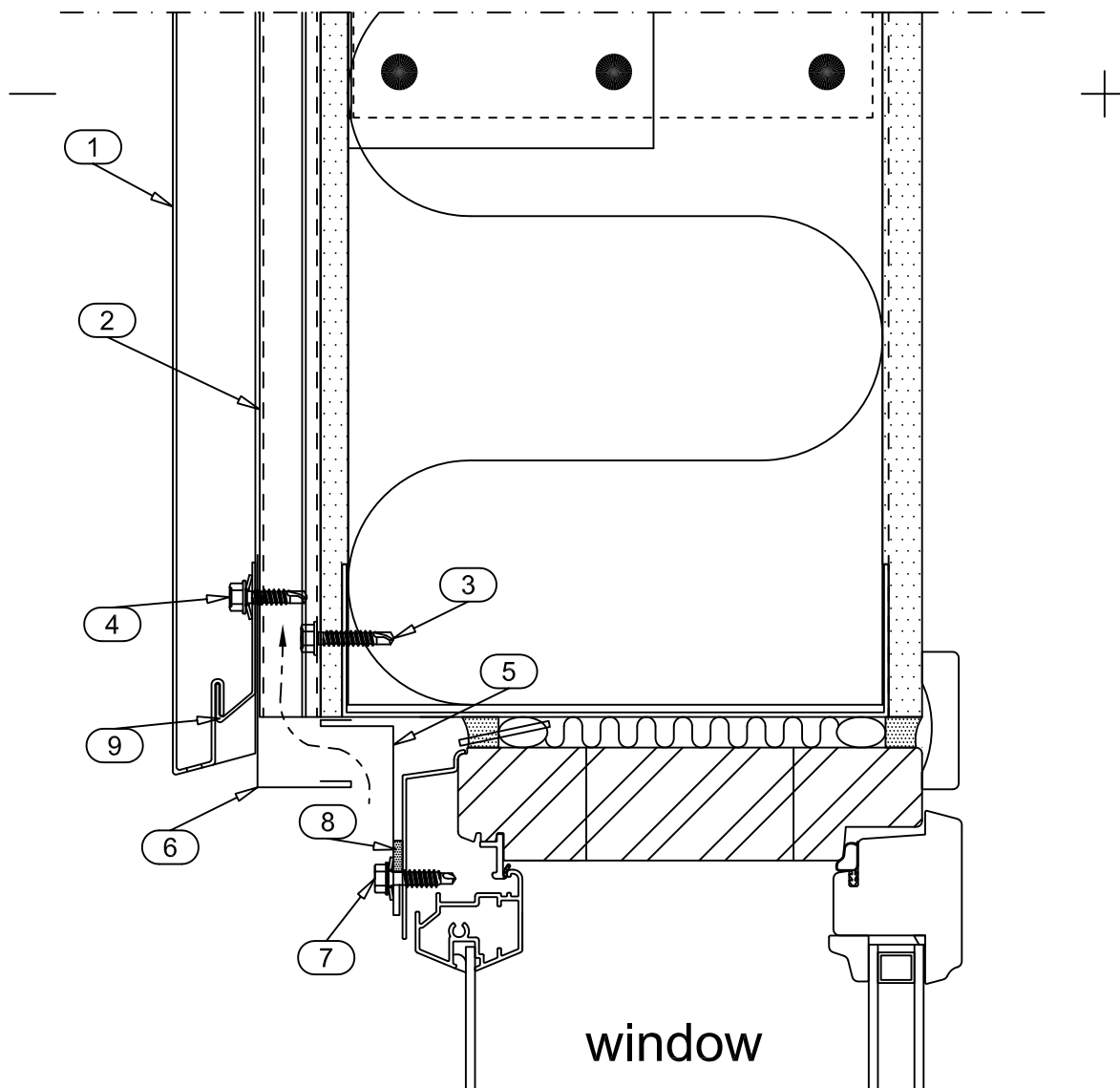
Date 12.08.2011	Rev. date	Work nr.	Drw. nr. LRSP500DE-8	Rev.
Drawn by Ruukki	Rev.			
Scale 1:2.5	Building		File nr.	



- ☐ 1. LIBERTA ELEGANT 500 & 500GRANDE
- ☐ 2. SUPPORT STUD CA1SS1
- ☐ 3. SCREW S1H48025D03 (SFS intec SD3-4.8x25)
- ☐ 4. SCREW S3H48020D03A4 (SFS intec SD3-S-A14-4.8x20)
- ☐ 5. STORM FLASHING CA1ST1X
- ☐ 6. SUPPORT FLASHING CA1SU1X
- ☐ 7. SILL FLASHING CA1S1X
- ☐ 8. SCREW S3H48035WA4 (SFS intec SW2-S-A14-4.8x35)

☒ DELIVERY OF RUUKKI

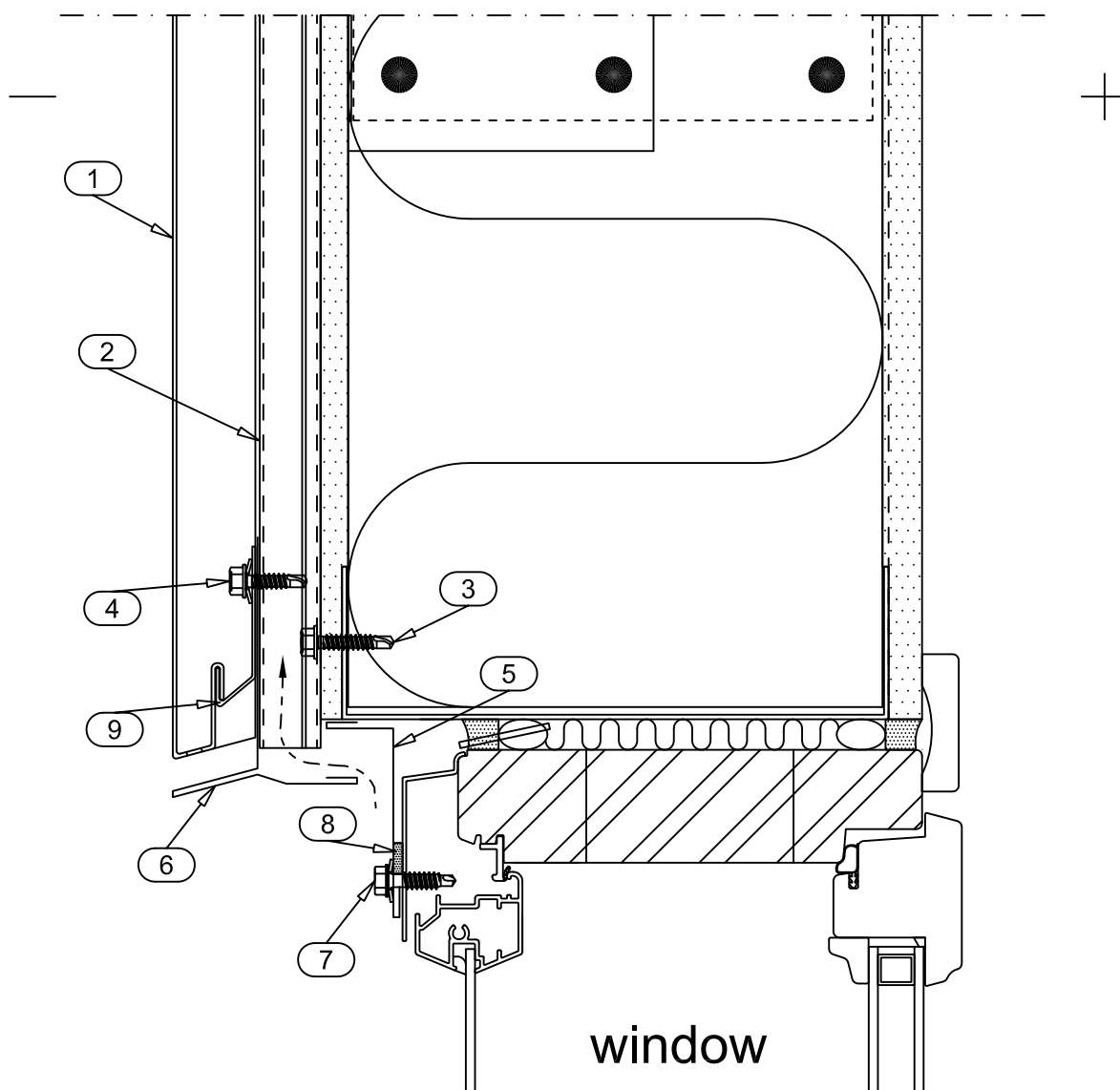
Date 12.08.2011	Rev. date	Work nr.	Drw. nr.	Rev.
Drawn by Ruukki	Rev.		LRSP500DE-9	
Scale 1:2.5	Building	File nr.		



- ☐ 1. LIBERTA ELEGANT 500 & 500GRANDE
- ☐ 2. SUPPORT STUD CA1SS1
- ☐ 3. SCREW S1H48025D03 (SFS intec SD3-4.8x25)
- ☐ 4. SCREW S3H48020D03A4 (SFS intec SD3-S-A14-4.8x20)
- ☐ 5. COVER FLASHING CA1C10X
- ☐ 6. COVER FLASHING CA1C8X
- ☐ 7. SCREW S3H55022L02A4 (SFS intec SL2-S-A14-5.5x22)
- ☐ 8. SEALING STRIP EA3SS410
- ☐ 9. STARTING FILLET CA1SF2

☒ DELIVERY OF RUUKKI

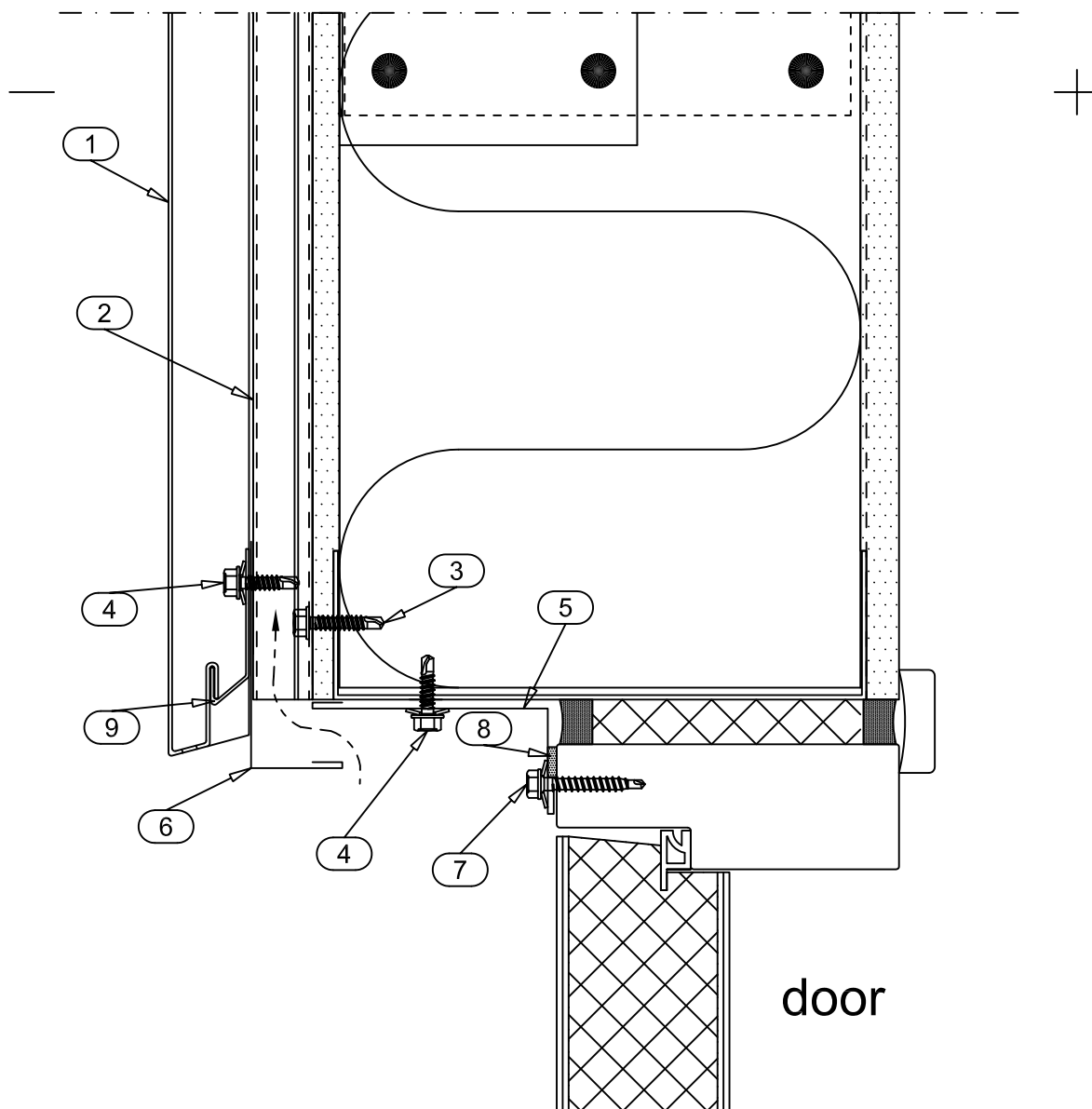
Date 12.08.2011	Rev. date	Work nr.	Drw. nr.	Rev.
Drawn by Ruukki	Rev.		LRSP500DE-10	
Scale 1:2.5	Building	File nr.		



- ☐ 1. LIBERTA ELEGANT 500 & 500GRANDE
- ☐ 2. SUPPORT STUD CA1SS1
- ☐ 3. SCREW S1H48025D03 (SFS intec SD3-4.8x25)
- ☐ 4. SCREW S3H48020D03A4 (SFS intec SD3-S-A14-4.8x20)
- ☐ 5. COVER FLASHING CA1C10X
- ☐ 6. COVER FLASHING CA1C9X
- ☐ 7. SCREW S3H55022L02A4 (SFS intec SL2-S-A14-5.5x22)
- ☐ 8. SEALING STRIP EA3SS410
- ☐ 9. STARTING FILLET CA1SF2

☒ DELIVERY OF RUUKKI

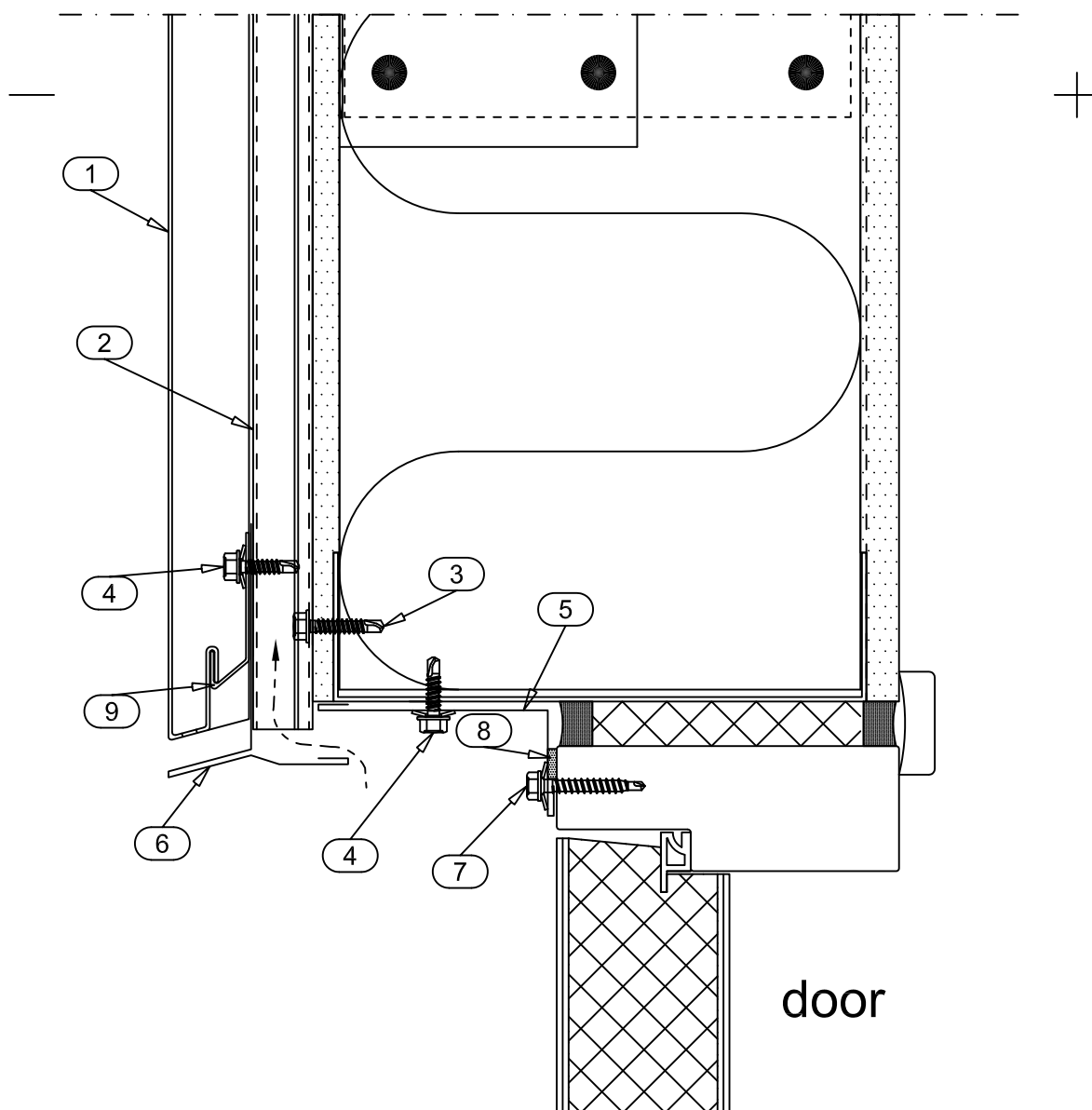
Date 12.08.2011	Rev. date	Work nr.	Drw. nr.	Rev.
Drawn by Ruukki	Rev.		LRSP500DE-11	
Scale 1:2.5	Building	File nr.		



- ☐ 1. LIBERTA ELEGANT 500 & 500GRANDE
- ☐ 2. SUPPORT STUD CA1SS1
- ☐ 3. SCREW S1H48025D03 (SFS intec SD3-4.8x25)
- ☐ 4. SCREW S3H48020D03A4 (SFS intec SD3-S-A14-4.8x20)
- ☐ 5. COVER FLASHING CA1C10X
- ☐ 6. COVER FLASHING CA1C8X
- ☐ 7. SCREW S3H48035WA4 (SFS intec SW2-S-A14-4.8x35)
- ☐ 8. SEALING STRIP EA3SS410
- ☐ 9. STARTING FILLET CA1SF2

☒ DELIVERY OF RUUKKI

Date 12.08.2011	Rev. date	Work nr.	Drw. nr.	Rev.
Drawn by Ruukki	Rev.		LRSP500DE-12	
Scale 1:2.5	Building	File nr.		



- ☐ 1. LIBERTA ELEGANT 500 & 500GRANDE
- ☐ 2. SUPPORT STUD CA1SS1
- ☐ 3. SCREW S1H48025D03 (SFS intec SD3-4.8x25)
- ☐ 4. SCREW S3H48020D03A4 (SFS intec SD3-S-A14-4.8x20)
- ☐ 5. COVER FLASHING CA1C10X
- ☐ 6. COVER FLASHING CA1C9X
- ☐ 7. SCREW S3H48035WA4 (SFS intec SW2-S-A14-4.8x35)
- ☐ 8. SEALING STRIP EA3SS410
- ☐ 9. STARTING FILLET CA1SF2

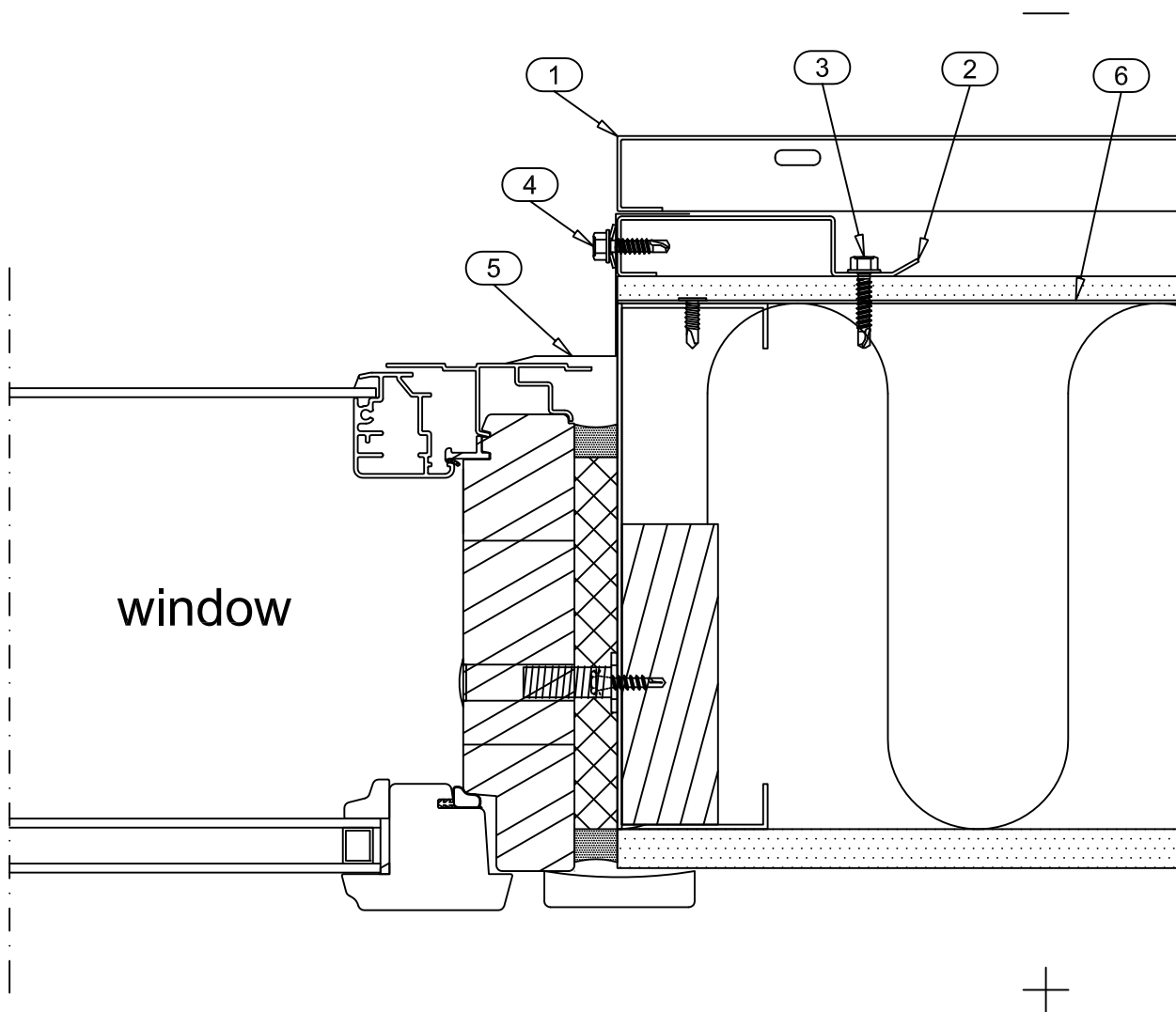
☒ DELIVERY OF RUUKKI



Contents of drawing

Liberta elegant 500 & 500Grande
Vertical edge of window
Horizontal section

Date 12.08.2011	Rev. date	Work nr.	Drw. nr. LRSP500DE-13	Rev.
Drawn by Ruukki	Rev.			
Scale 1:2.5	Building		File nr.	



- ☐ 1. LIBERTA ELEGANT 500 & 500GRANDE
- ☐ 2. SUPPORT STUD CA1RS1
- ☐ 3. SCREW S1H48025D03 (SFS intec SD3-4.8x25)
- ☐ 4. SCREW S3H48020D03A4 (SFS intec SD3-S-A14-4.8x20)
- ☐ 5. COVER FLASHING CA1C1X
- ☐ 6. HORIZONTAL BRACE STRIP (for fastening studs)

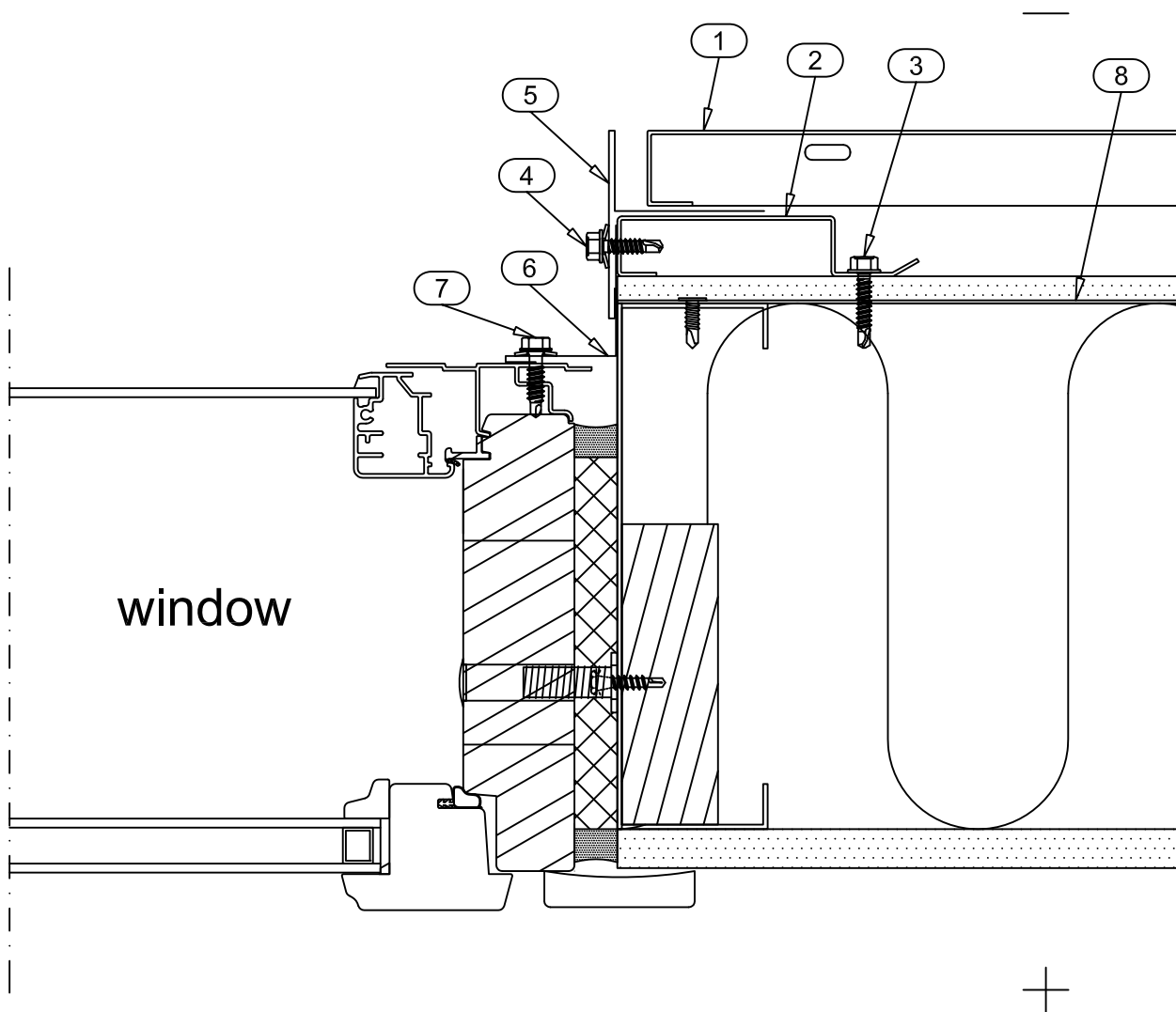
☒ DELIVERY OF RUUKKI



Contents of drawing

Liberta elegant 500 & 500Grande
Vertical edge of window
Horizontal section

Date 12.08.2011	Rev. date	Work nr.	Drw. nr. LRSP500DE-14	Rev.
Drawn by Ruukki	Rev.			
Scale 1:2.5	Building		File nr.	



- ☐ 1. LIBERTA ELEGANT 500 & 500GRANDE
- ☐ 2. SUPPORT STUD CA1RS1
- ☐ 3. SCREW S1H48025D03 (SFS intec SD3-4.8x25)
- ☐ 4. SCREW S3H48020D03A4 (SFS intec SD3-S-A14-4.8x20)
- ☐ 5. COVER FLASHING CA1C3X
- ☐ 6. COVER FLASHING CA1C12X
- ☐ 7. SCREW S3H55022L02A4 (SFS intec SL2-S-A14-5.5x22)
- ☐ 8. HORIZONTAL BRACE STRIP (for fastening studs)

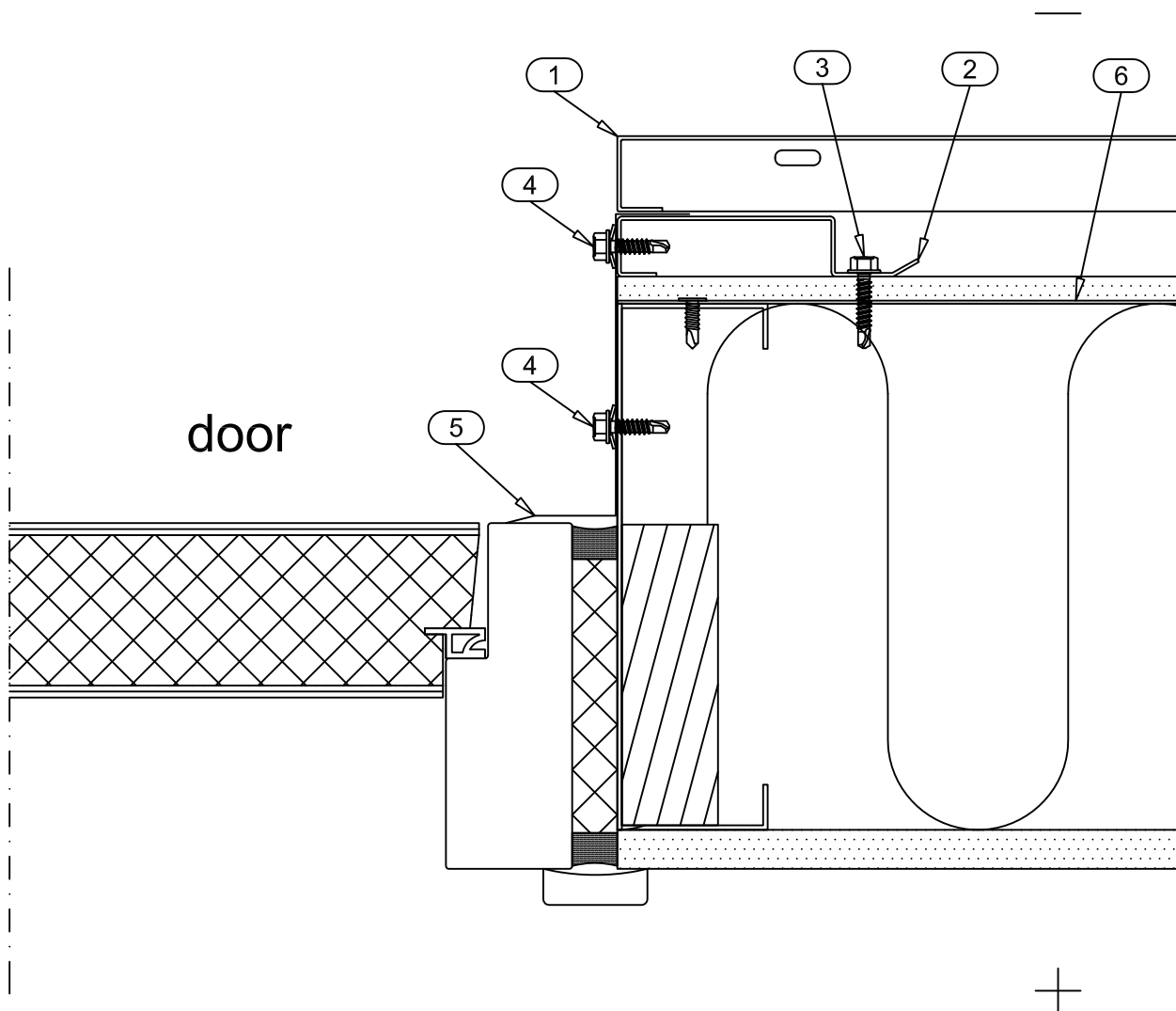
☒ DELIVERY OF RUUKKI



Contents of drawing

Liberta elegant 500 & 500Grande
Vertical edge of door
Horizontal section

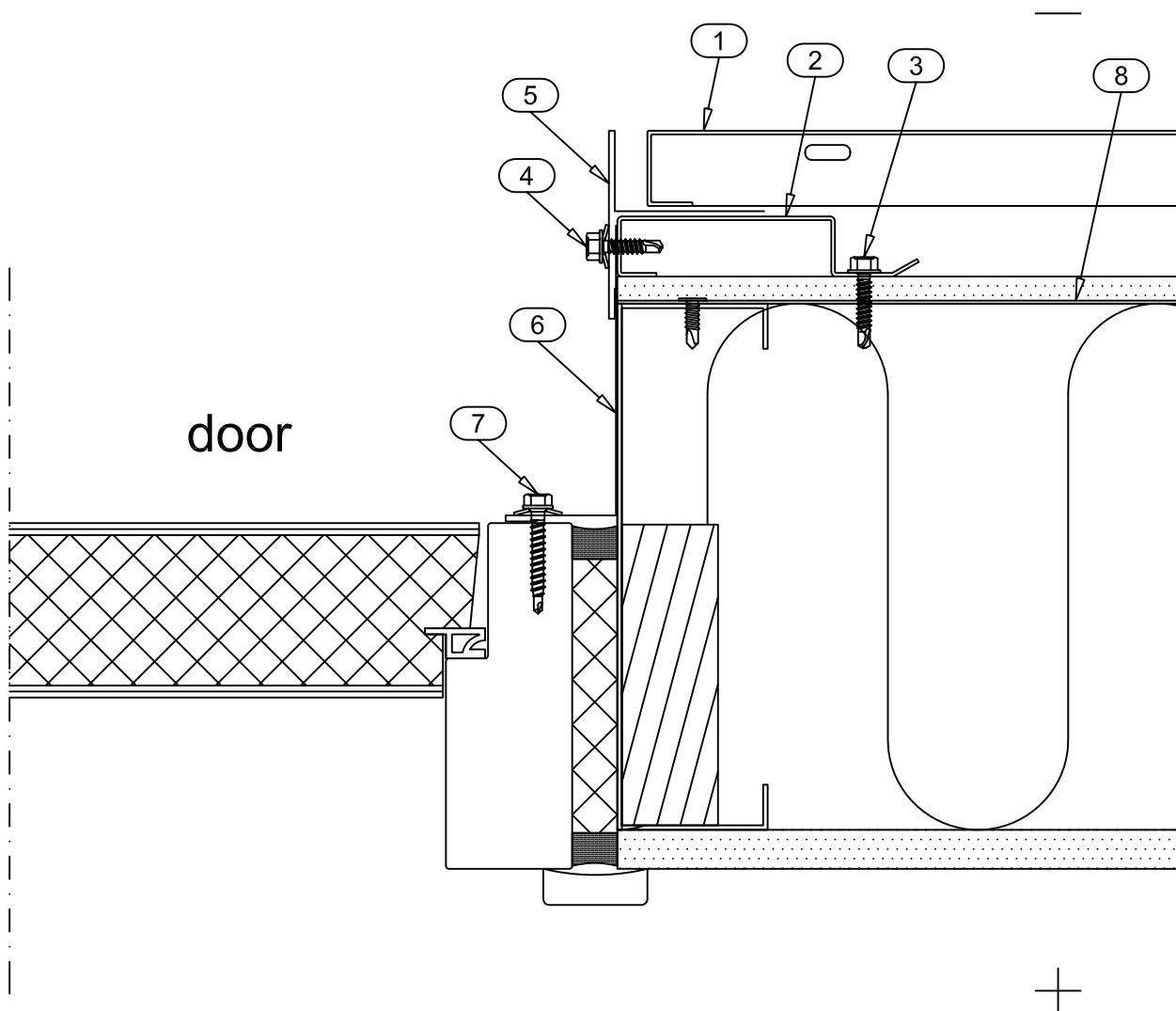
Date 12.08.2011	Rev. date	Work nr.	Drw. nr. LRSP500DE-15	Rev.
Drawn by Ruukki	Rev.			
Scale 1:2.5	Building		File nr.	



- ☐ 1. LIBERTA ELEGANT 500 & 500GRANDE
- ☐ 2. SUPPORT STUD CA1RS1
- ☐ 3. SCREW S1H48025D03 (SFS intec SD3-4.8x25)
- ☐ 4. SCREW S3H48020D03A4 (SFS intec SD3-S-A14-4.8x20)
- ☐ 5. COVER FLASHING CA1C1X
- ☐ 6. HORIZONTAL BRACE STRIP (for fastening studs)

☒ DELIVERY OF RUUKKI

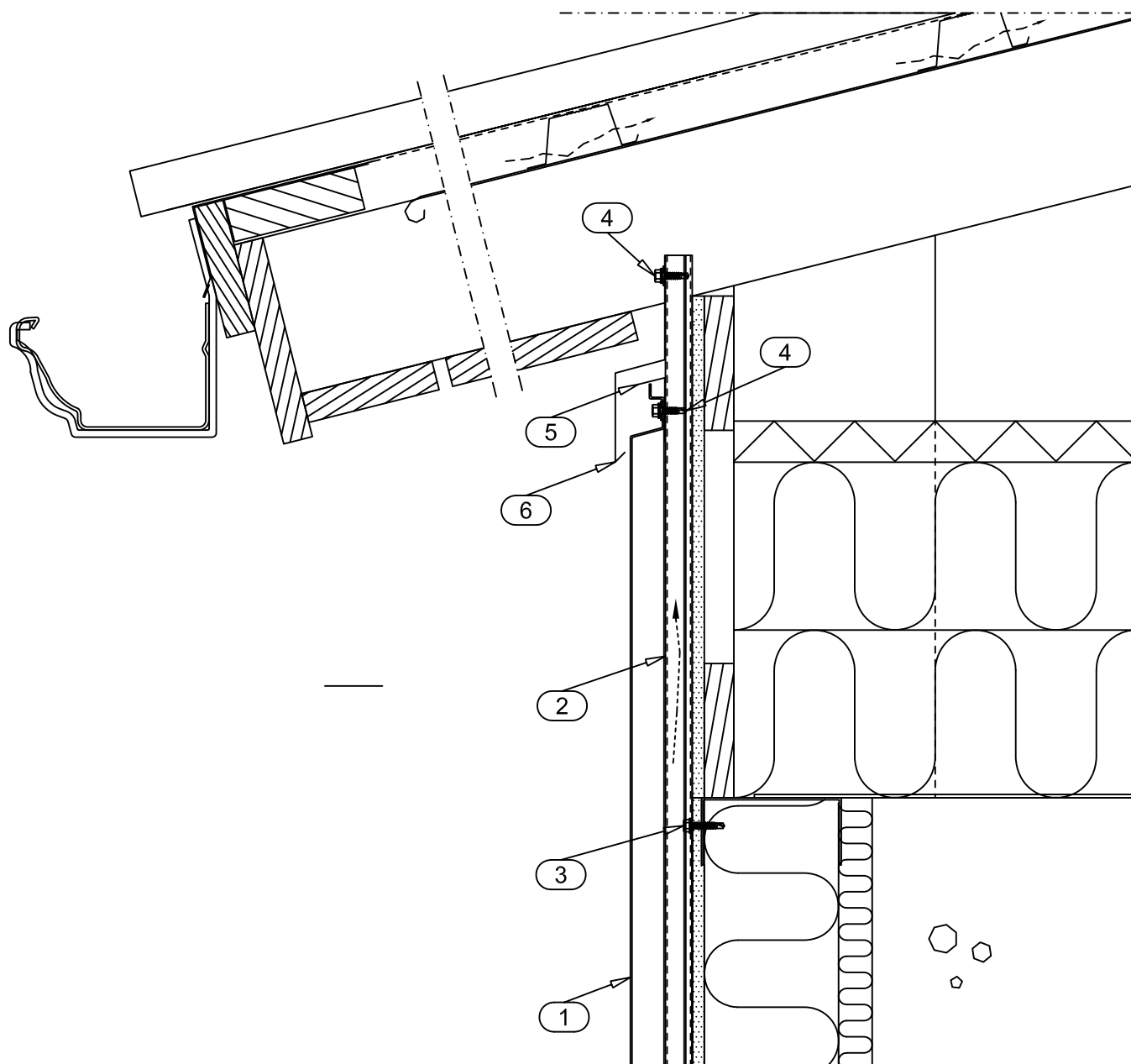
Date 12.08.2011	Rev. date	Work nr.	Drw. nr. LRSP500DE-16	Rev.
Drawn by Ruukki	Rev.			
Scale 1:2.5	Building		File nr.	



- ☐ 1. LIBERTA ELEGANT 500 & 500GRANDE
- ☐ 2. SUPPORT STUD CA1RS1
- ☐ 3. SCREW S1H48025D03 (SFS intec SD3-4.8x25)
- ☐ 4. SCREW S3H48020D03A4 (SFS intec SD3-S-A14-4.8x20)
- ☐ 5. COVER FLASHING CA1C3X
- ☐ 6. COVER FLASHING CA1C12X
- ☐ 7. SCREW S3H48035WA4 (SFS intec SW2-S-A14-4.8x35)
- ☐ 8. HORIZONTAL BRACE STRIP (for fastening studs)

☒ DELIVERY OF RUUKKI

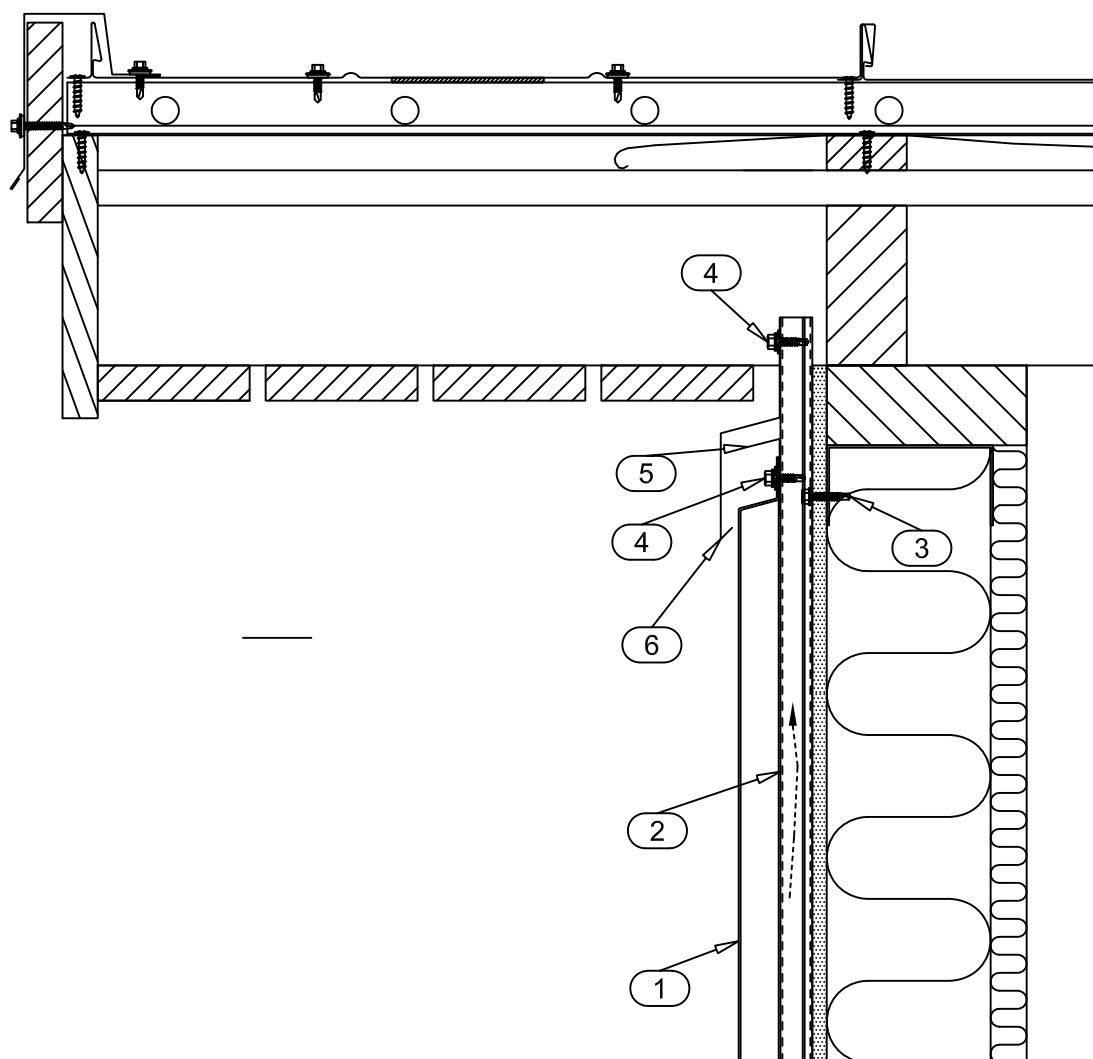
Date 12.08.2011	Rev. date	Work nr.	Drw. nr.	Rev.
Drawn by Ruukki	Rev.		LRSP500DE-17	
Scale 1:5	Building		File nr.	



- ☐ 1. LIBERTA ELEGANT 500 & 500GRANDE
- ☐ 2. SUPPORT STUD CA1SS1
- ☐ 3. SCREW S1H48025D03 (SFS intec SD3-4.8x25)
- ☐ 4. SCREW S3H48020D03A4 (SFS intec SD3-S-A14-4.8x20)
- ☐ 5. STORM FLASHING CA1ST1X
- ☐ 6. EAVES FLASHING CA1E1X

☒ DELIVERY OF RUUKKI

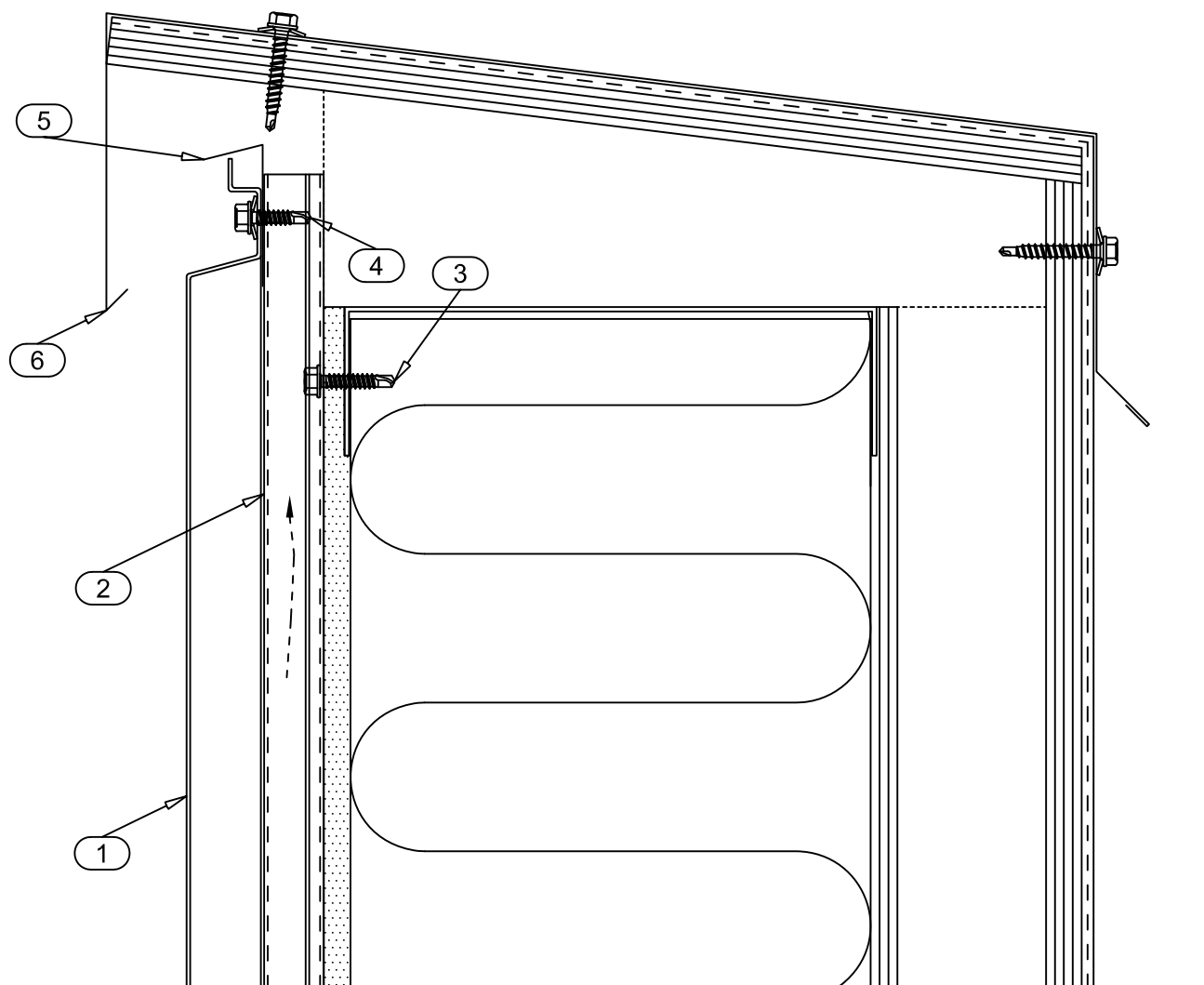
Date 12.08.2011	Rev. date	Work nr.	Drw. nr.	Rev.
Drawn by Ruukki	Rev.		LRSP500DE-18	
Scale 1:5	Building		File nr.	



- ☐ 1. LIBERTA ELEGANT 500 & 500GRANDE, PITCHED PANEL
- ☐ 2. SUPPORT STUD CA1SS1
- ☐ 3. SCREW S1H48025D03 (SFS intec SD3-4.8x25)
- ☐ 4. SCREW S3H48020D03A4 (SFS intec SD3-S-A14-4.8x20)
- ☐ 5. STORM FLASHING CA1ST1X
- ☐ 6. EAVES FLASHING CA1E1X

☒ DELIVERY OF RUUKKI

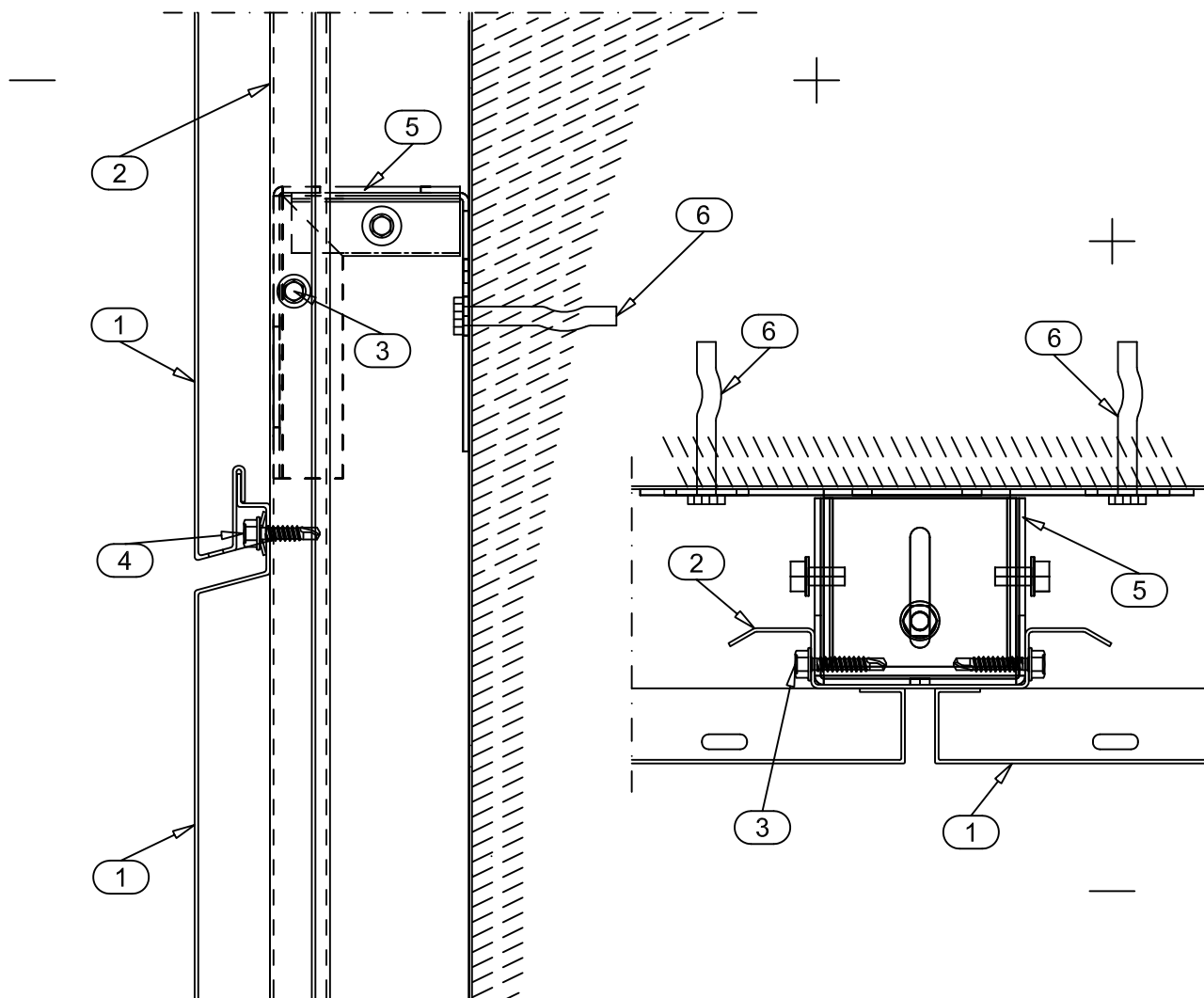
Date 12.08.2011	Rev. date	Work nr.	Drw. nr.	Rev.
Drawn by Ruukki	Rev.		LRSP500DE-19	
Scale 1:2.5	Building	File nr.		



- ☐ 1. LIBERTA ELEGANT 500 & 500GRANDE
- ☐ 2. SUPPORT STUD CA1SS1
- ☐ 3. SCREW S1H48025D03 (SFS intec SD3-4.8x25)
- ☐ 4. SCREW S3H48020D03A4 (SFS intec SD3-S-A14-4.8x20)
- ☐ 5. STORM FLASHING CA1ST1X
- ☐ 6. EAVES FLASHING CA1E2X

☒ DELIVERY OF RUUKKI

Date 12.08.2011	Rev. date	Work nr.	Drw. nr. LRSP500DE-20	Rev.
Drawn by Ruukki	Rev.			
Scale 1:2.5	Building		File nr.	



- ☐ 1. LIBERTA ELEGANT 500 & 500GRANDE
- ☐ 2. SUPPORT STUD CA1SS1
- ☐ 3. SCREW S1H48025D03 (SFS intec SD3-4.8x25)
- ☐ 4. SCREW S3H48020D03A4 (SFS intec SD3-S-A14-4.8x20)
- ☐ 5. ADJUSTABLE FASTENER CAFRSP
- ☐ 6. FASTENER

☒ DELIVERY OF RUUKKI